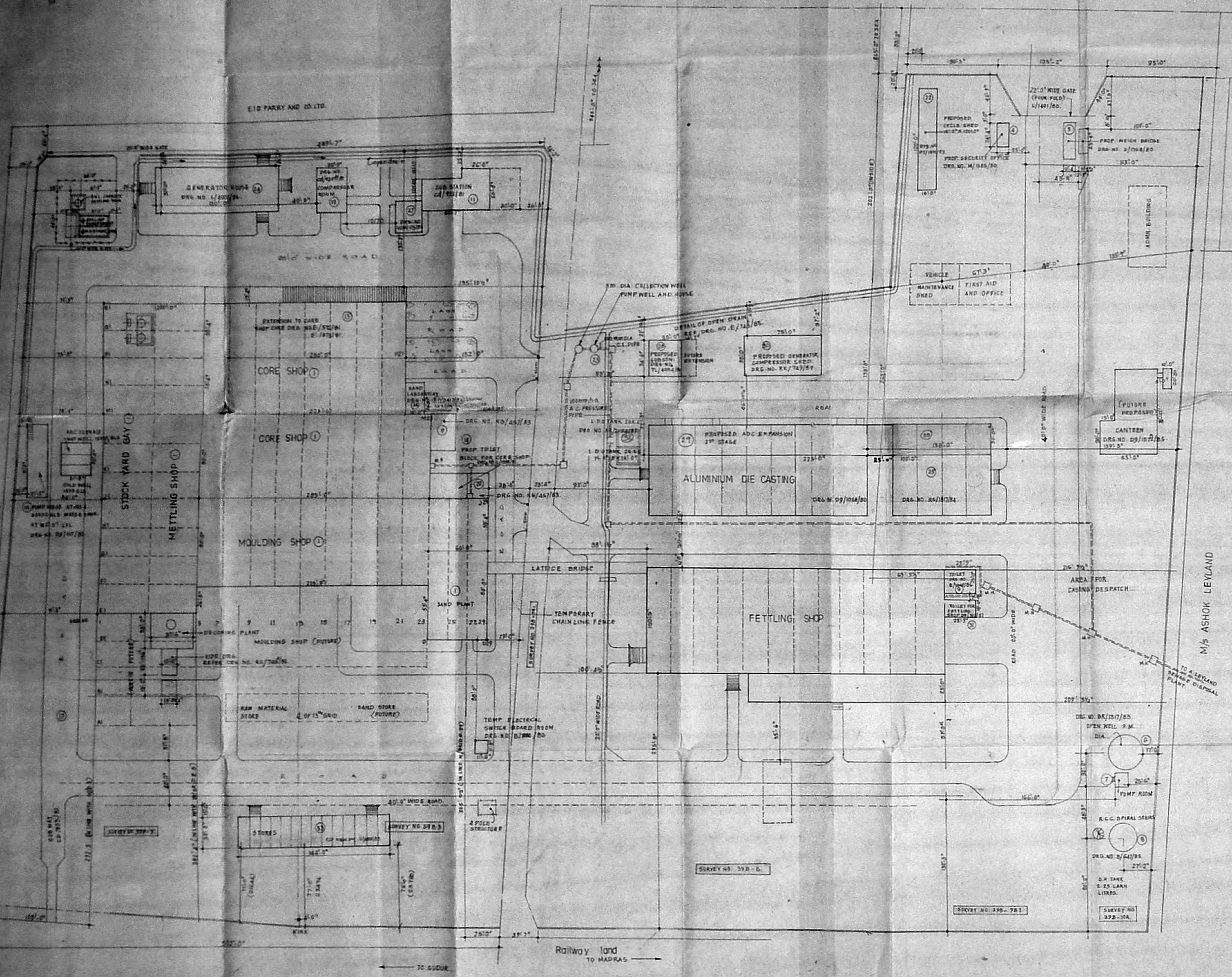


EID PARRY AND CO. LTD.



SNO.	DESCRIPTION	PRINC. ARCHT. AND DATE	EXTENSION ARCHT. AND DATE	CHIEF ENGINEER'S SIGNATURE	REMARKS
1	CORE TOOLING SAND BLAST MELTING STOCK YARD BAY.	DRG. NO. 1/200/84	DRG. NO. 2/200/84	DRG. NO. 3/200/84	DESIGNATION APPROVED BY M.S.A. VIDE TRAIL LETTERS.
2	FETTLING SHOP	DRG. NO. 4/200/84	- DO -	- DO -	D. CH. C. 1/200/84
3	ALUMINIUM DIECASTING DEPT.	LETTERED BY C. S. S. 1/200/84	DRG. NO. 5/200/84	DRG. NO. 6/200/84	DRG. NO. 7/200/84
4	SECURITY OFFICE	LETTERED BY C. S. S. 1/200/84	DRG. NO. 8/200/84	DRG. NO. 9/200/84	DRG. NO. 10/200/84
5	TIME OFFICE & WEIGH ROOM	LETTERED BY C. S. S. 1/200/84	DRG. NO. 11/200/84	DRG. NO. 12/200/84	DRG. NO. 13/200/84
6	30" DIA. WELL	LETTERED BY C. S. S. 1/200/84	DRG. NO. 14/200/84	DRG. NO. 15/200/84	DRG. NO. 16/200/84
7	BOILER HOUSE	LETTERED BY C. S. S. 1/200/84	DRG. NO. 17/200/84	DRG. NO. 18/200/84	DRG. NO. 19/200/84
8	OVER HEAD WATER TANK	LETTERED BY C. S. S. 1/200/84	DRG. NO. 20/200/84	DRG. NO. 21/200/84	DRG. NO. 22/200/84
9	FETTLING SHOP TOILET	LETTERED BY C. S. S. 1/200/84	DRG. NO. 23/200/84	DRG. NO. 24/200/84	DRG. NO. 25/200/84
10	2 BAY EXTENSION ALUM. DIE CASTING	- DO -	- DO -	- DO -	DRG. NO. 26/200/84
11	33 KVA SUBSTATION	- DO -	- DO -	- DO -	DRG. NO. 27/200/84
12	COMPRESSOR HOUSE	- DO -	- DO -	- DO -	DRG. NO. 28/200/84
13	EXTENSION TO CORE SHOP	- DO -	- DO -	- DO -	DRG. NO. 29/200/84
14	PORE SHED TOILET	- DO -	- DO -	- DO -	DRG. NO. 30/200/84
15	10" DIA. WATER TANK	- DO -	- DO -	- DO -	DRG. NO. 31/200/84
16	GAZER ROUND FUND HOUSE AND CR. TANK	- DO -	- DO -	- DO -	DRG. NO. 32/200/84
17	SUB. LAY.	- DO -	- DO -	- DO -	DRG. NO. 33/200/84
18	DISPENSARY	- DO -	- DO -	- DO -	DRG. NO. 34/200/84
19	CRAN TO SHED FOR CORE SHOP	- DO -	- DO -	- DO -	DRG. NO. 35/200/84
20	CRAN TO SHED FOR SAND BAY	- DO -	- DO -	- DO -	DRG. NO. 36/200/84
21	1.00 TANK SOLE	- DO -	- DO -	- DO -	DRG. NO. 37/200/84
22	CYCLE SHED	- DO -	- DO -	- DO -	DRG. NO. 38/200/84
23	COLLECTOR WELL AND DUMP WELL	- DO -	- DO -	- DO -	DRG. NO. 39/200/84
24	GRIPPER CHARGER PLATFORM	- DO -	- DO -	- DO -	DRG. NO. 40/200/84
25	4 BAY EXTENSION DIECASTING	- DO -	- DO -	- DO -	DRG. NO. 41/200/84
26	GENERATOR HOUSE	- DO -	- DO -	- DO -	DRG. NO. 42/200/84
27	WT. CAPACITOR ENCLOSURE	- DO -	- DO -	- DO -	DRG. NO. 43/200/84
28	NET SUB. STATION	- DO -	- DO -	- DO -	DRG. NO. 44/200/84
29	PROPOSED ADC EXTENSION	- DO -	- DO -	- DO -	DRG. NO. 45/200/84
30	PROPOSED GENERATOR AND COMPRESSOR SHED	- DO -	- DO -	- DO -	DRG. NO. 46/200/84
31	PROPOSED TOILET BLOCK EXTENSION TO FETTLING SHOP	- DO -	- DO -	- DO -	DRG. NO. 47/200/84
32	20" DIA. LDO TANK	- DO -	- DO -	- DO -	DRG. NO. 48/200/84
33	STORES	- DO -	- DO -	- DO -	DRG. NO. 49/200/84
34	SAND LABORATORY	- DO -	- DO -	- DO -	DRG. NO. 50/200/84
35	PROPOSED 30" EXTENSION OF THE 4 BAY ADC SHED	- DO -	- DO -	- DO -	DRG. NO. 51/200/84

PROPOSED WORK SHOWN THUS
THIS DATE SUPPLEMENTED DRG. NO. 1/3/87



ENNORE FOUNDRIES LTD,
ENNORE, MADRAS-57.

EAST LAND LAYOUT PLAN

SCALE 1:400

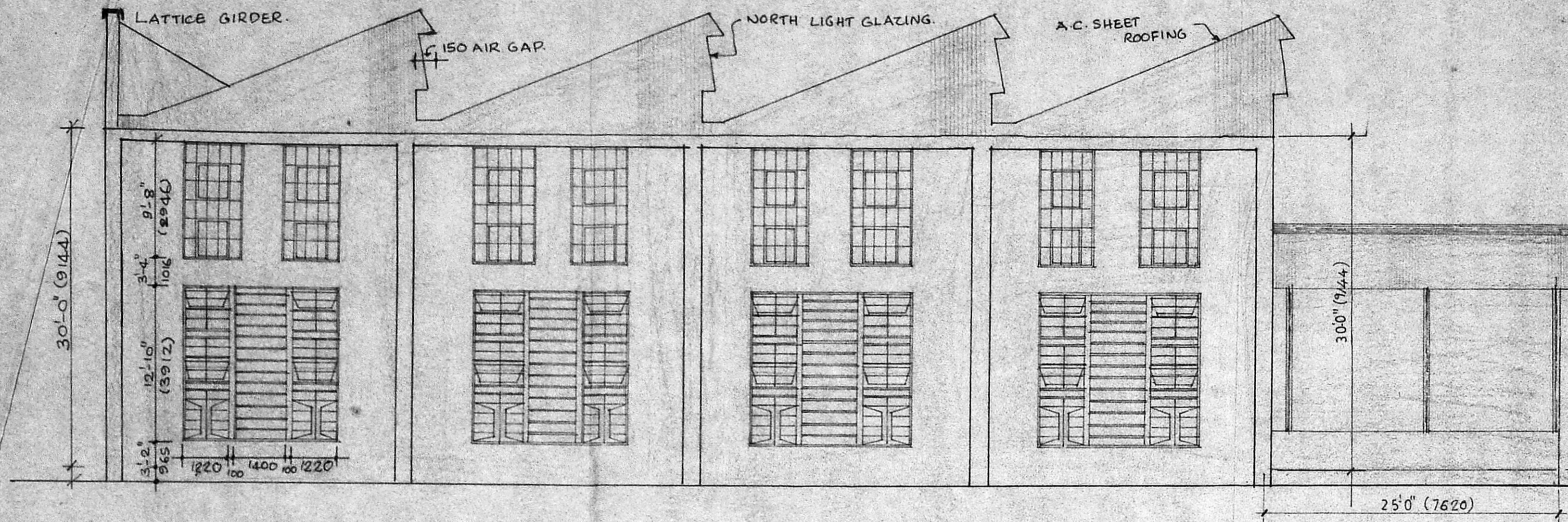
DRW. AR

CHECKED: DATE:

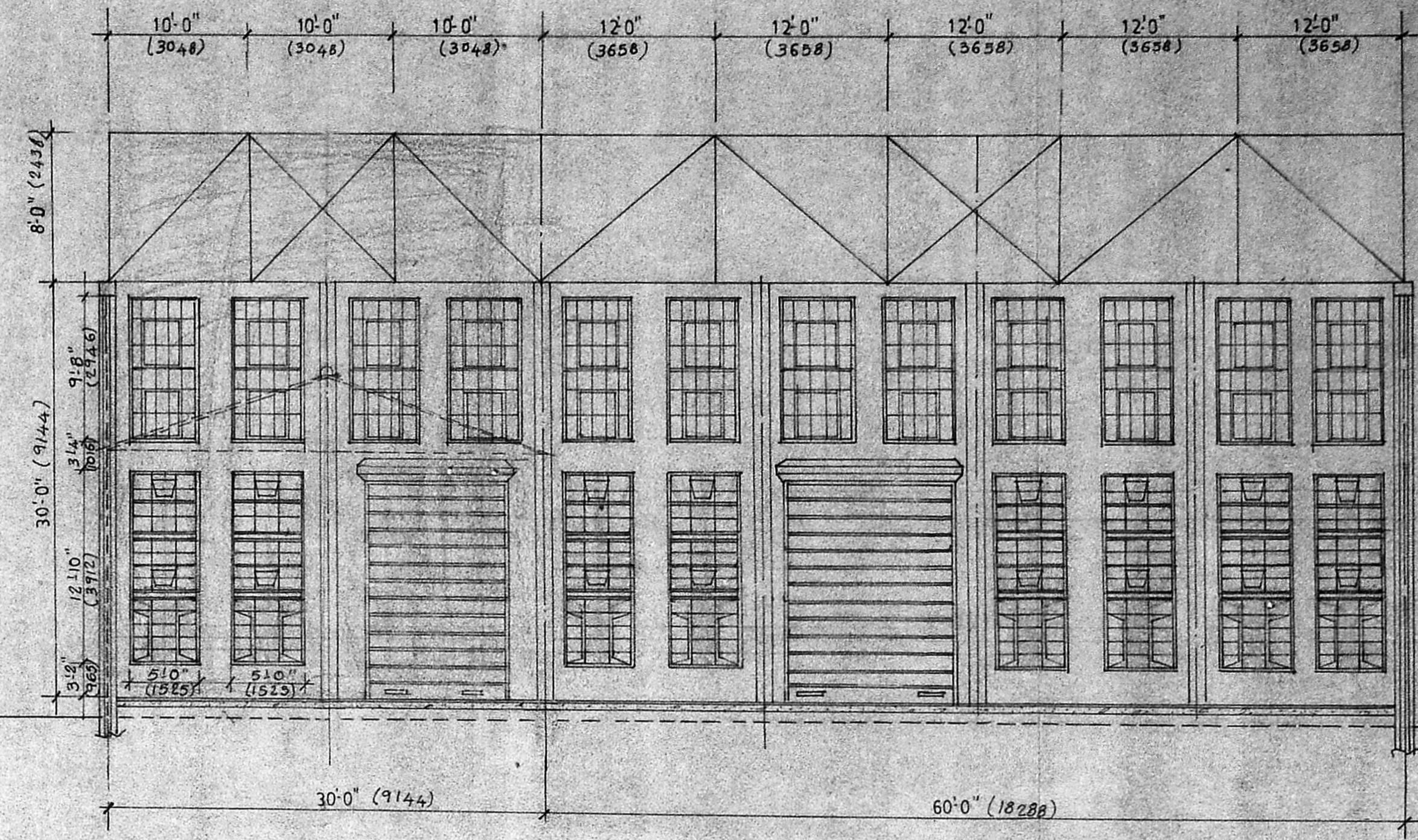
M/S CRNARAYANA RAQ
ARCHITECTS AND ENGINEERS,
LUZ, MADRAS 600004

JINNA LAD, L.C.
1st and 2nd Floor
K. S. Mani Malai Street
Madras-600 057.

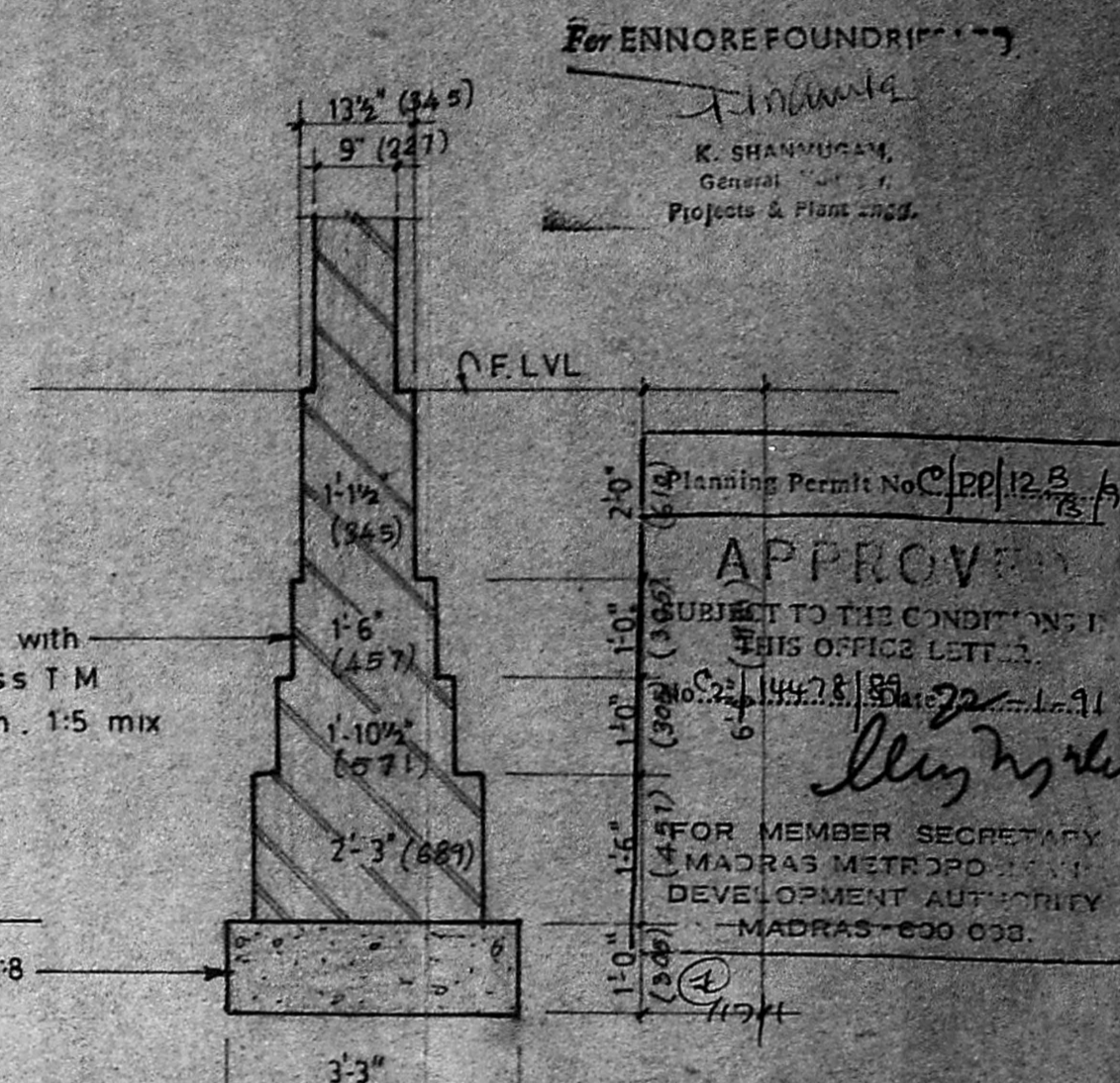
DRG NO AR/3212/88



EAST ELEVATION



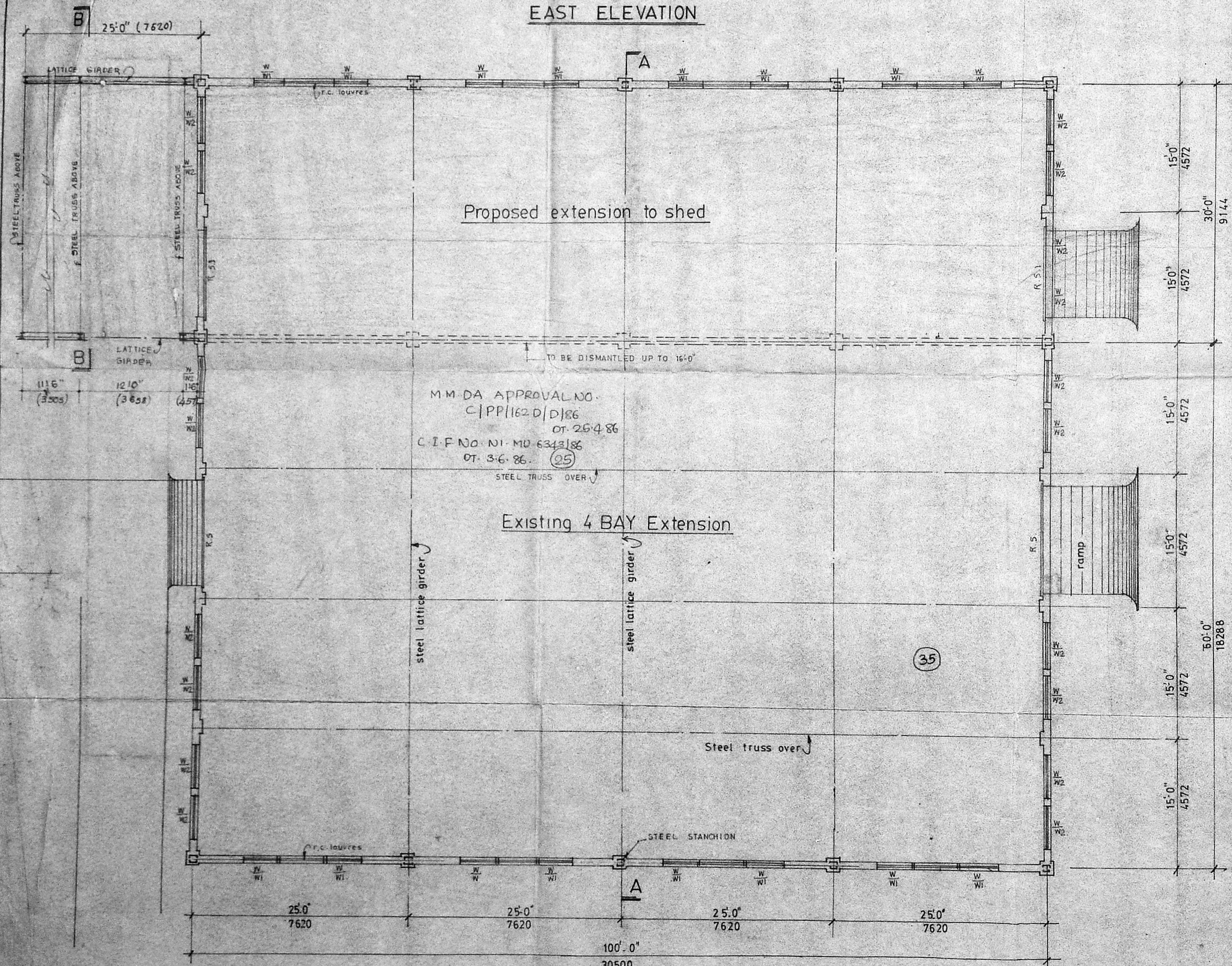
SECTION - A A



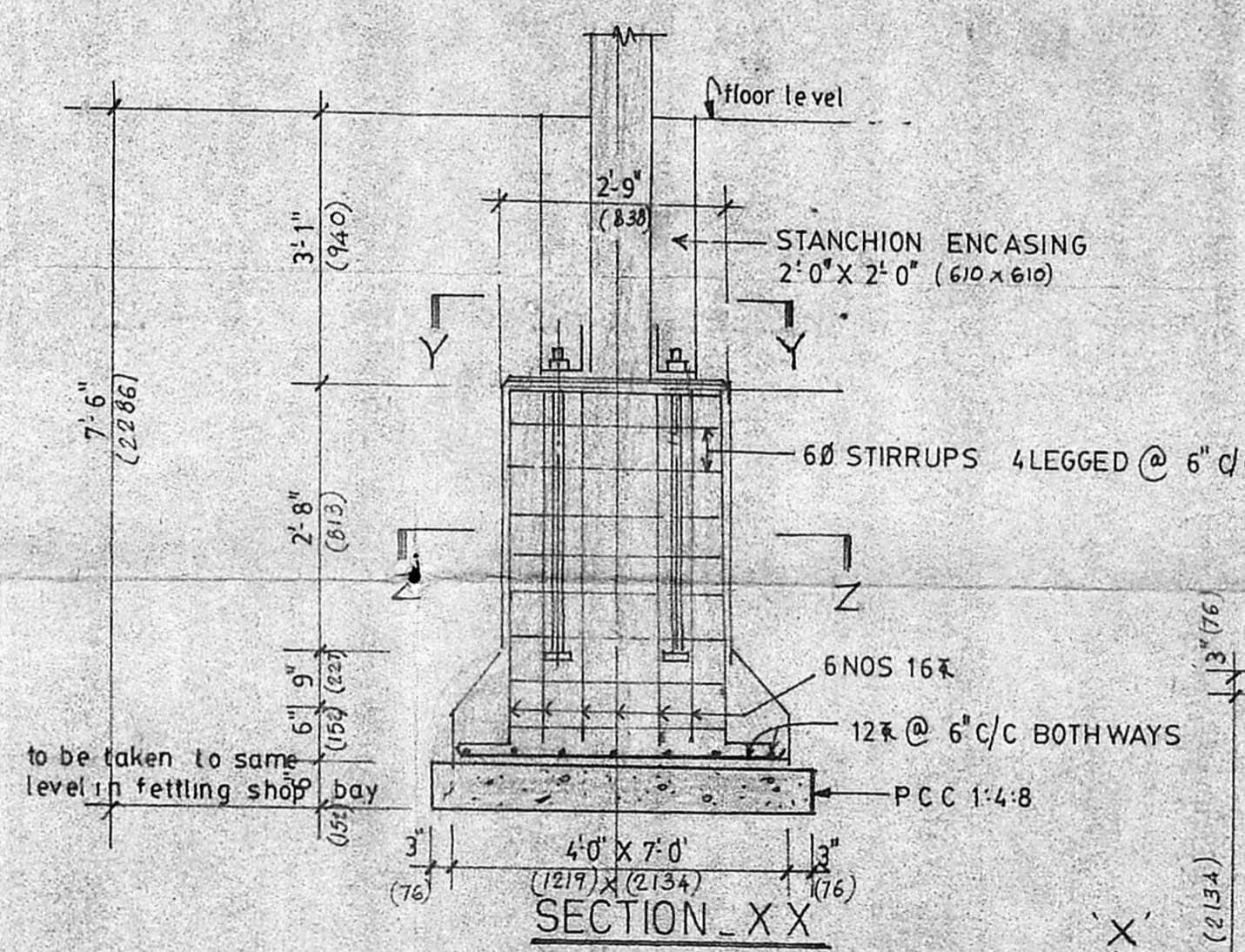
Details of 9" & 13 1/2" Thk Bk. wall foundation

SCHEDULE OF JOINERY

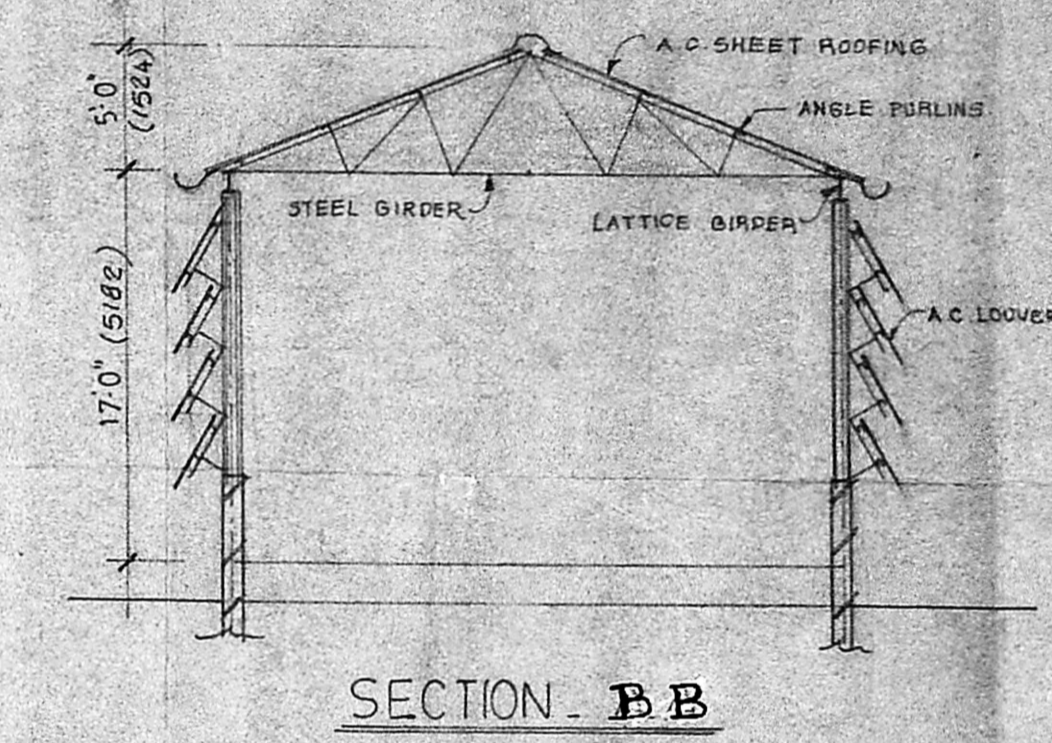
R S STEEL ROLLING SHUTTER	12' 0" X 15' 0"	16 C15
W STEEL CASEMENT WINDOW	5' 0" X 9' 8"	16 C15
W1	DO	3' 10" X 12' 10"
W2	DO	4' 10" X 12' 10"
W3	DO	
RS1 STEEL ROLLING SHUTTER	10' 0" X 15' 0"	
W1 - STEEL CASEMENT WINDOW	12 HCC 6	
	12 HFF 6	
	12 HCC 6	
	12 HFF 6	
W2	DO	15 HCC 6
		15 HFF 6
		15 HCC 6
		15 HFF 6



PLAN

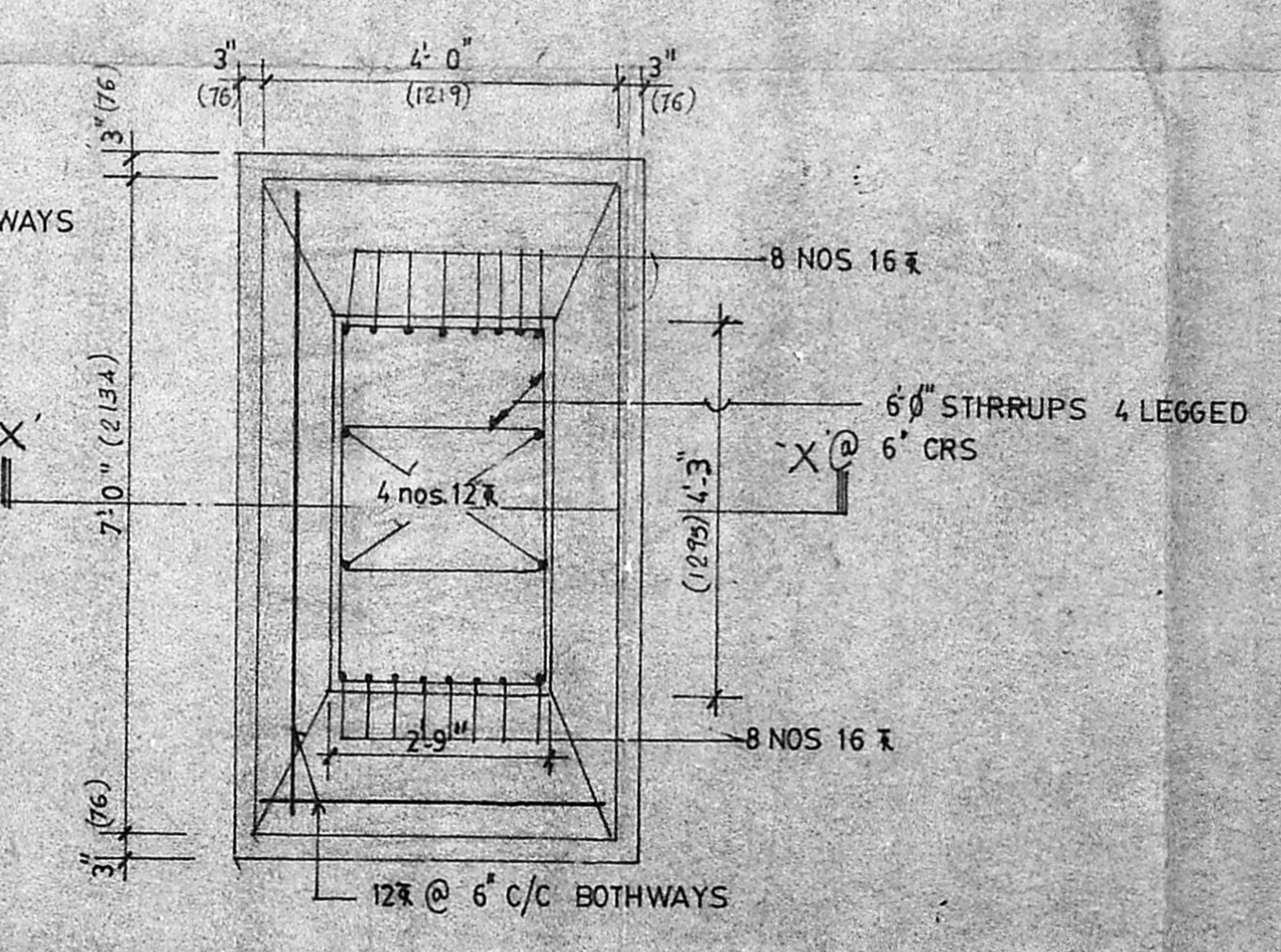


SECTION - XX



SECTION - BB

PLAN AT YY



PLAN AT ZZ

67-88	Generally Amended
B	
22-3-88	Generally Amended

ENNORE FOUNDRIES LTD. MADRAS

PROPOSED 30'-0" EXTENSION TO THE 4 BAY ADC SHED

DRAWN - SCALE - 1" = 8'-0"
CHECKED - DATE -

M/s. C.R. NARAYANA RAO., ARCHITECTS AND ENGINEERS LUZ MADRAS - 4

B. TECH. (HONS) M. S. (ILL) PH.D.
M. AM. SOC. C.E. F.I.E. F.I.V. REGD. ARCHITECT.

DRG. NO. AR/1564/88

JINNOJI RAO, L.C.E.
Licensed Building Surveyor.
Kathiwakkam Municipal Township
Madras-600 052.



PROPOSED

C	GENERALLY AMENDED.
23-7-88	